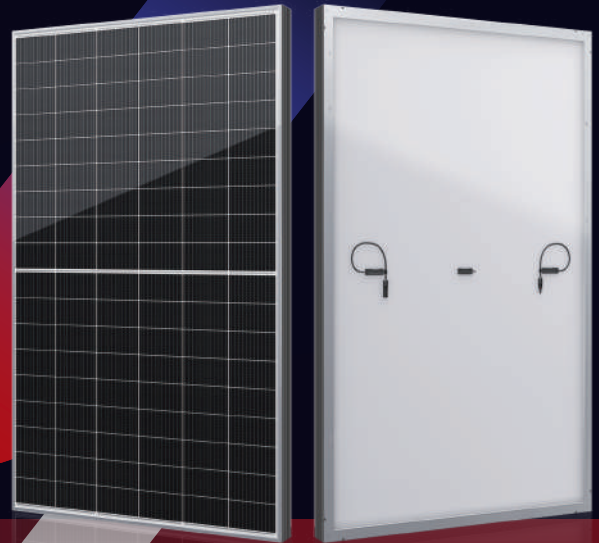


SV SERIES

Seize the Moment, Leading the Efficiency






535-550W



● SV SERIES

Seraphim redefined the high-efficiency module series by integrating 210mm silicon wafers with multi-busbar and half-cut cell technologies. Seraphim panel combined creative technology effectively and extremely improved the module efficiency and power output.

● KEY FEATURES

-  Less mismatch to get more power
-  Less power loss by minimizing the shading impact
-  Competitive low light performance
-  3 times EL test to ensure best quality
-  Ideal choice for utility and commercial scale projects by reduced BoS and improved ROI

● QUALITY SYSTEM

ISO9001 / ISO14001 / ISO45001

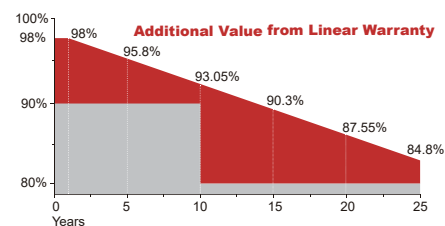
● PRODUCT CERTIFICATION



● INSURANCE

PICC

● WARRANTY



Guarantee on product material and workmanship



Linear power output warranty



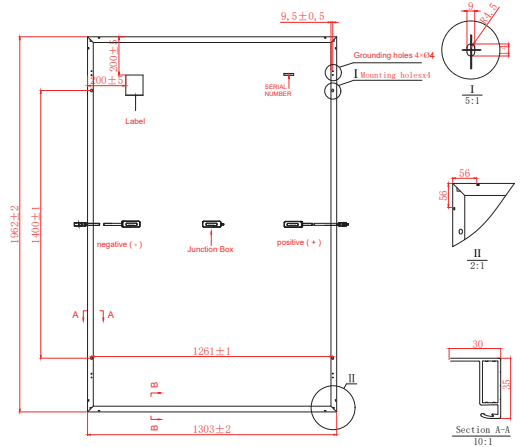
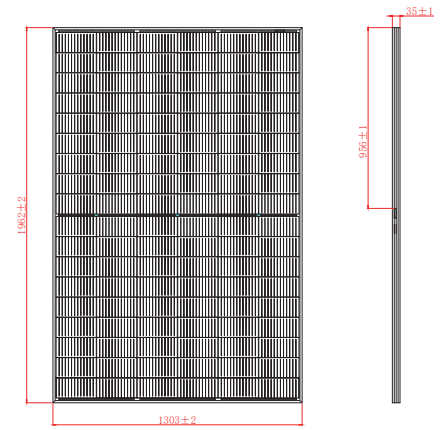
SERAPHIM SOLAR SYSTEM CO., LTD

Add: No.10, TongshunRd, HenglinTown, Wujin District, 213000, Changzhou, China
 Tel: +86-519-68788166 Email: info@seraphim-energy.com

Electrical Characteristics

Module Type	SRP-535-BMD-HV		SRP-540-BMD-HV		SRP-545-BMD-HV		SRP-550-BMD-HV	
	STC	NOCT	STC	NOCT	STC	NOCT	STC	NOCT
Maximum Power at STC (Pmp)	535	402	540	405	545	409	550	413
Open Circuit Voltage (Voc)	38.90	36.33	39.10	36.53	39.30	36.71	39.50	36.90
Short Circuit Current (Isc)	17.89	14.47	17.94	14.50	17.99	14.54	18.04	14.58
Maximum Power Voltage (Vmp)	31.55	29.46	31.77	29.67	31.99	29.84	32.21	30.02
Maximum Power Current (Imp)	16.96	13.63	17.00	13.66	17.04	13.70	17.08	13.75
Module Efficiency at STC(ηm)	20.93		21.12		21.32		21.51	
Power Tolerance	(0, +4.99)							
Maximum System Voltage	1500V DC							
Maximum Series Fuse Rating	30 A							

STC: Irradiance 1000 W/m²; module temperature 25°C; AM=1.5
 Power measurement tolerance: +/-3%; Voltage measurement tolerance: +/-2%; Current measurement tolerance: +/-4%



Temperature Characteristics

Pmax Temperature Coefficient	-0.34 %/°C
Voc Temperature Coefficient	-0.27 %/°C
Isc Temperature Coefficient	+0.05 %/°C
Operating Temperature	-40 ~ +85 °C
Nominal Operating Cell Temperature(NOCT)	45±2 °C

Mechanical Specifications

External Dimensions	1962 x 1303 x 35 mm
Weight	27.8 kg
Solar Cells	PERC Mono (132 pcs)
Front Glass	3.2mm AR coating tempered glass, low iron
Frame	Anodized aluminium alloy
Junction Box	IP68, 3 diodes
Output Cables	4.0mm ² , 250mm(+)/350mm(-) or Customized Length
Mechanical Load	Front side 5400Pa/ Rear side 2400Pa
Connector	Staubli MC4 EVO2/ Chuangda TT02 /Renhe 05-8
Fire Safety Class	Class C

Packing Configuration

	1962x1303x35 mm
Container	40'HQ
Pieces per Pallet	31
Pallets per Container	17
Pieces per Container	527

I-V Curve

