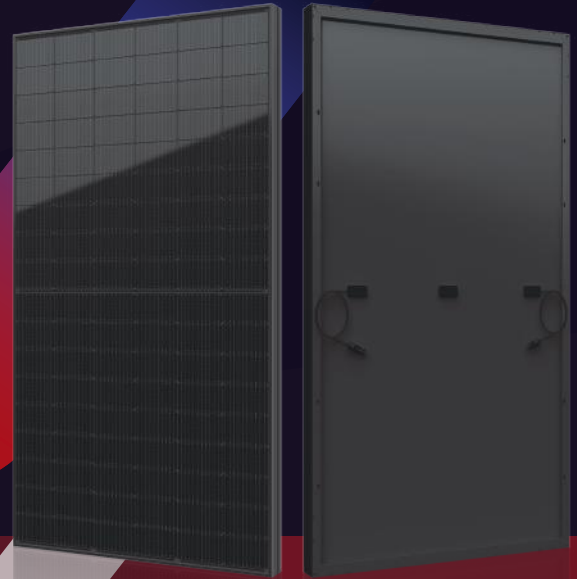


# SIV SERIES

Small Changes, Big Accomplishments






## 400-415W



### ● SIV SERIES

Seraphim redefined the high-efficiency module series by integrating 182mm silicon wafers with multi-busbar and half-cut cell technologies. Seraphim panel combined creative technology effectively and extremely improved the module efficiency and power output.

### ● KEY FEATURES

-  Less mismatch to get more power
-  Less power loss by minimizing the shading impact
-  Competitive low light performance
-  3 times EL test to ensure best quality
-  Ideal choice for utility and commercial scale projects by reduced BoS and improved ROI

### ● QUALITY SYSTEM

ISO9001 / ISO14001 / ISO45001

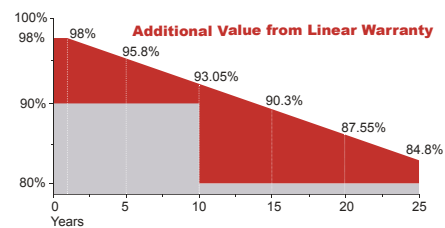
### ● PRODUCT CERTIFICATION



### ● INSURANCE

**PICC**

### ● WARRANTY



**15 YEARS** Guarantee on product material and workmanship

**25 YEARS** Linear power output warranty



**SERAPHIM SOLAR SYSTEM CO., LTD**

Add: No.10, TongshunRd, HenglinTown, Wujin District, 213000, Changzhou, China  
 Tel: +86-519-68788166 Email: [info@seraphim-energy.com](mailto:info@seraphim-energy.com)

