

SII SERIES

Multiple upgrades were forged into one






335-370_w



● SII SERIES

Seraphim redefined the high-efficiency module series by integrating 158.75mm silicon wafers with PERC and half-cut cell technologies. Seraphim panel combined creative technology effectively and extremely improved the module efficiency and power out.

● KEY FEATURES

-  Less mismatch to get more power
-  Less power loss by minimizing the shading impact
-  Competitive low light performance
-  3 times EL test to ensure best quality
-  Ideal choice for utility and commercial scale projects by reduced BOS and improve ROI.

● QUALITY SYSTEM

ISO19001 / ISO14001 / OHSAS18001

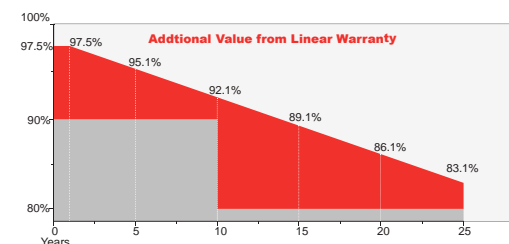
● PRODUCT CERTIFICATION



● INSURANCE

PICC

● WARRANTY



15 YEARS Guarantee on product material and workmanship

25 YEARS linear power output warranty



Electrical Characteristics

Module Type	SRP-355-BMC-HV	SRP-360-BMC-HV	SRP-365-BMC-HV	SRP-370-BMC-HV
	STC	STC	STC	STC
Maximum Power at STC (Pmp)	355	360	365	370
Open Circuit Voltage (Voc)	44.0	44.2	44.4	44.5
Short Circuit Current (Isc)	10.07	10.15	10.23	10.31
Maximum Power Voltage (Vmp)	37.2	37.4	37.6	37.7
Maximum Power Current (Imp)	9.55	9.63	9.71	9.82
Module Efficiency at STC(η m)	19.13	19.40	19.67	19.94
Power Sorting (W)	(0 ~ +4.99)			
Maximum System Voltage	1500 V DC			
Maximum Series Fuse Rating	25 A			

STC: Irradiance 1000 W/m² module temperature 25°C AM=1.5
 Power measurement tolerance: +/-3%; Voltage measurement tolerance: +/-2%; Current measurement tolerance: +/-4%

Temperature Characteristics

Pmax Temperature Coefficient	-0.36 %/°C
Voc Temperature Coefficient	-0.28 %/°C
Isc Temperature Coefficient	+0.05 %/°C
Operating Temperature	-40 ~ +85 °C
Nominal Operating Cell Temperature (NOCT)	45±2 °C

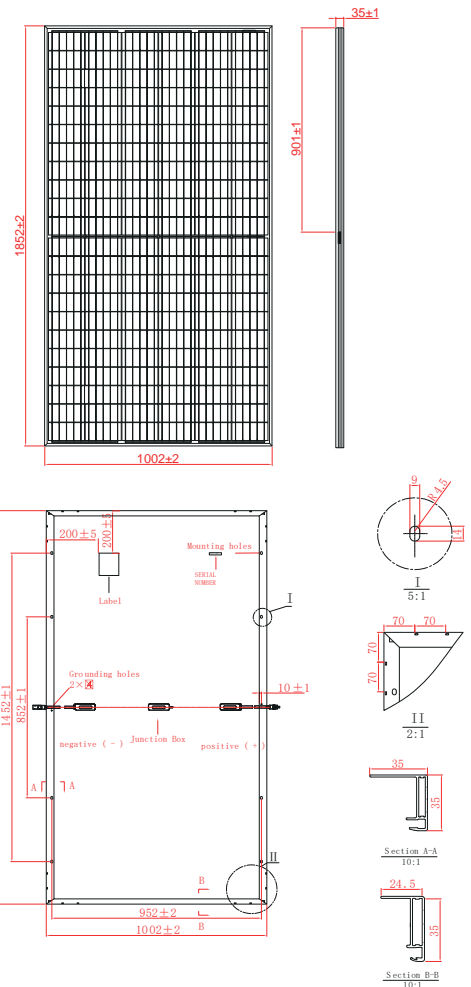
Mechanical Specifications

External Dimensions	1852 x 1002 x 35 mm
Weight	20.0kg
Solar Cells	PERC Mono(132pcs)
Front Glass	3.2 mm AR coating tempered glass, low iron
Frame	Anodized aluminium alloy
Junction Box	IP68, 3 diodes
Output Cable	4.0 mm ² , Portrait:255mm(+)/355mm(-); Landscape:1200mm
Mechanical Load	Front side 5400Pa/ Back side 2400Pa
Connector	Genuine MC4 EVO2/ TT02 / 05-8
Fire Safety Class	Class C

Packing Configuration

	1852 x 1002 x 35 mm	
Container	20'GP	40'HQ
Pieces per Pallet	31	31+2*
Pallets per Container	12	24
Pieces per Container	372	792

* 31+2 pieces per pallet is the special package which only suits for container transport.
 For details, please consult SERAPHIM.



I-V Curve

